



1.2 Broadband Application

1.2.1 BRCP DDF

Description

Based on Quante™ RCP product technology, which offers category 5 performance in transmission, BRCP meets all specific requirements of high data rates in Digital Distribution Frame applications.

This product is especially suitable for cell phone switching unit and long distance transmission applications.

The product allows 3 wire circuit management (abs) using screened jumpers and cables. Earthing of the screen wires is completed automatically through the backmount frame.

Different configurations are available according to the cables and jumper management required in the DDF. Complete blocks of 32 or 64 circuits, as well as, discrete disconnection modules (4 circuits) are available.

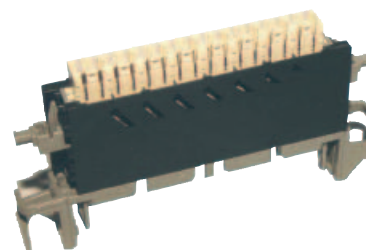
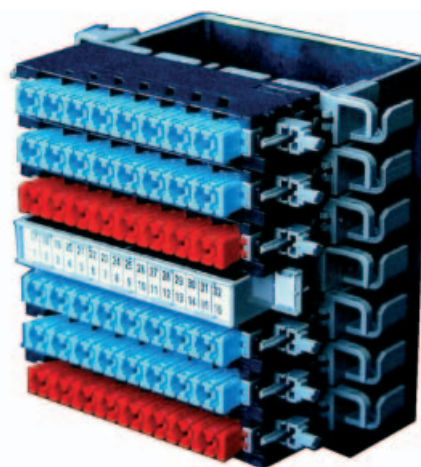
Two possibilities:

- Termination of screen on the disconnection module (abs module)
- Termination of screens on a specific earthing modules (s module)

Using the 3M straight IDC technology (Quante™ STG 2000 range), the BRCP offers a compact solution due to its standard pitch of only 16mm.

The BRCP contacts are capable of accommodating different conductor sizes from diameter 0.4 to 0.8mm. Specific connectors with contacts for stranded wire (7 cores of 0.13mm) and for small gauge solid conductors (0.32mm) are available upon request.

Specific blocks can be designed (upon request) for interfaces such as coax-twisted pair block with impedance adaptation.



Highlights:

- High data rates (category 5)
- Blocks or module configuration
- Screens collector module
- abs modules
- High density (16 mm pitch)

1.2 Broadband Application

1.2.1 BRCP DDF

Type/Order text

Ref.-No.

ab configuration with cable screen collector module

32 circuit DDF block

Dimensions (LxWxD): 126 x 112 x 80,5 mm

Each block is equipped with:

- 4 x 8 pair disconnection modules with wire guide channels (blue)
- 2 x cable screen collector module (32 wires) with automatic earthing (red)
- 1 label holder in the middle of the block
- 7 way backmount frame

C241800A0000

8 pair DDF a b module (blue)

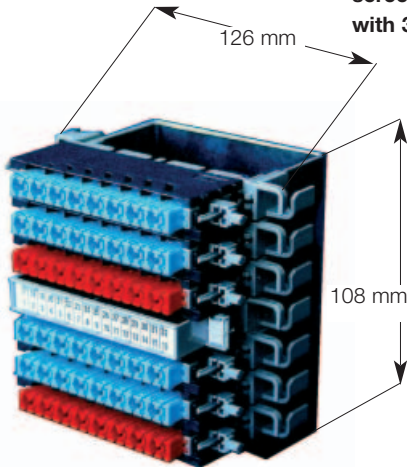
C241625A0000

8 pair DDF a b module with screened wire guide channels (blue)

P45920DH0000

screen collector module with 32 IDC positions (red)

C241628A0000



abs disconnection modules

4 abs circuits disconnection module with wire guide channels (ivory)

C241634A0000

Quante BRCP DDF block Accessories

Test cord 2 wires for a b modules	C242613A0000
Test cord 4 wires for a b modules	C242610A0000
Patchcord for a b modules	P39431A50000
Test cord 2 wires for a b s modules	C242613A0000
Test cord 4 wires for a b s modules	C242610A0000
Patchcord for a b s modules	P39482A50000



1.2 Broadband Application

1.2.2 BRCP High Density Terminal Block for DSLAM Interconnection

Description

3M BRCP High Density Terminal Block

The 3M BRCP High Density Terminal Block is the latest generation of MDF terminal blocks developed by 3M, specifically designed for xDSL deployment in the Central Office for DSLAMs interconnection with the existing Main Distribution Frame (MDF) as well as for DSLAM interconnection in remote street cabinets. The innovative product design of the BRCP HD provides superior features enabling both the DSLAM vendor – with its installation contractors – and the xDSL service provider rapid installation and providing superior density, matching the requirements of current mass xDSL lines deployment.

Optimizing the space at the MDF in the Central Office

Very compact by design, the BRCP HD requires much less space on the horizontal side of the MDF frame, making it also very adapted to confined spaces of remote applications such as shelters or technical rooms in residential or corporate buildings. Thanks to its high density this product is also very adapted for Remote DSL deployment in street cabinets.

Designed for xDSL deployment

The 3M BRCP High Density Terminal Block is modular by design (16 pair modularity) available in various pair counts enabling perfect match with 8 pair bundles of most DSLAM cable configurations in the market.

The BRCP HD is a swiveling double side - front and rear - block providing a clear demarcation of two termination areas, one at the rear for the DSLAM vendor installation team (direct termination of DSLAM cables), the other at the front for the xDSL service provider team to jumper its DSL subscribers.



3M™ BRCP HD TB, 192 pairs

Features:

- Rear and front facing direct IDC or Wire-Wrap contacts
- Separated termination areas for DSLAM round trip cables (POTS and LINE, at the rear) and subscriber jumpers (at the front)
- Different terminal block pair counts available ranging from 144, 192 to 256 pairs
- High density of individual 16 pair modules
- Wire guide channels
- Label holders (block, individual modules, individual pairs or group of pairs)
- Cable retention device
- Easy fixation upon metallic MDF frames
- No disconnection point available but testing capabilities

Benefits:

- Direct IDC can reduce installation costs versus costly connectorized blocks (with or without stub cables)
- Adapted to service providers using Wire Wrap connection technique (no specific need for training)
- Reduces installation mistakes such as wrong contact assignment
- Provides a physical/ legal demarcation between two different service teams
- Enables perfect match with 8 pair bundles of most DSLAM cable configurations in the market
- Reduces installation costs in avoiding costly and time consuming cable splits
- Saves over 50% MDF space in comparison with common terminal blocks in the market
- Adapted for both MDF, Colocation DF and Cabines applications
- Ensures professional and efficient wiring management
- Ensures clear and efficient identification and marking (pair and DSLAM card assignment...)
- Ensures signal integrity
- Can be adapted to in most standard MDF frames

1.2 Broadband Application

1.2.2 BRCP High Density Terminal Block for DSLAM Interconnection

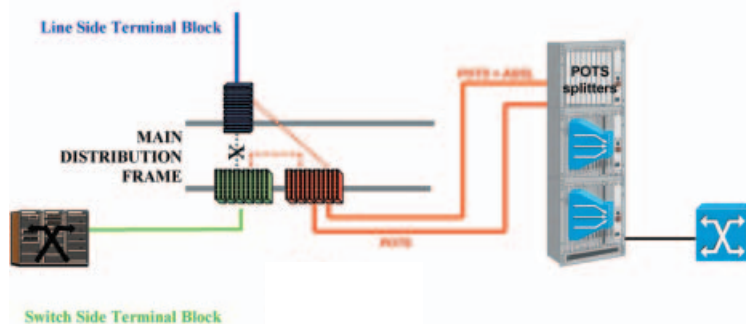
Specifications

Application

1 Block configuration

Each half of the block is dedicated to one type of signal

- POTS + DATA

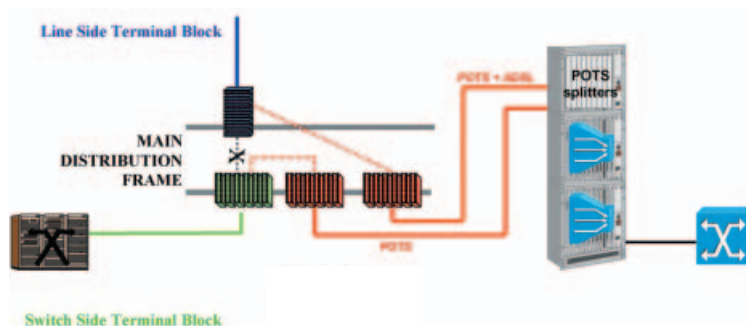


2 Blocks configuration

Each block is dedicated to one type of signal

- POTS + DATA

- POTS



Electrical performance

Attenuation in the range 3 to 30 MHz: < 0.1 dB

Return loss in the range 3 to 30 MHz: < -35 dB

Near End Cross Talk to 30 MHz: < 45 dB

Dimensions

Length: 144 pairs = 135mm

192 pairs = 180 mm

256 pairs = 240 mm

Width: 130 mm

Depth: 130 mm

Type/Order text

Ref.-No.



3M™ BRCP High Density Terminal Block

256 pairs, IDC

C242695A

3M™ BRCP High Density Terminal Block

256 pairs, WW

C242763A

3M™ BRCP High Density Terminal Block

192 pairs, IDC

C242684A

3M™ BRCP High Density Terminal Block

192 pairs, WW

C242764A

3M™ BRCP High Density Terminal Block

144 pairs, IDC

C242765A

3M™ BRCP High Density Terminal Block

144 pairs, WW

C242766A

1.2 Broadband Application

1.2.3 Category 6 Quante™ RCP

Description

Quante RCP - conceived for the high requirements in the efficient communication network

In a cabling system, connection by modules generally offers greater flexibility at the patching level. Modules also continue to be the only solution truly adapted to the control of large-scale systems.

The RCP range consists of a range of shielded and technical modules which are designed to be used within high data rate applications.

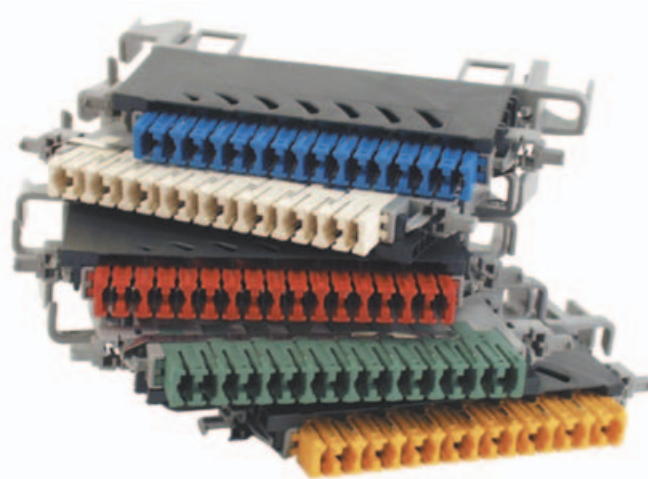
Technical modules are designed to enable a fast installation of interfaces between cables with various characteristics (for example a single cable with a RJ45 modular jack).

The interchangeable technical modules are fitted with removable electronic boards allowing for a complete solution for protection, display, adaptation, etc. In case of maintenance the electronic board can be replaced without removal of the connection module.

The range of shielded RCP 2000 modules guarantees shielding efficiency from one end of the connection chain to the other and permits considerable reduction of the effects of electromagnetic interference.

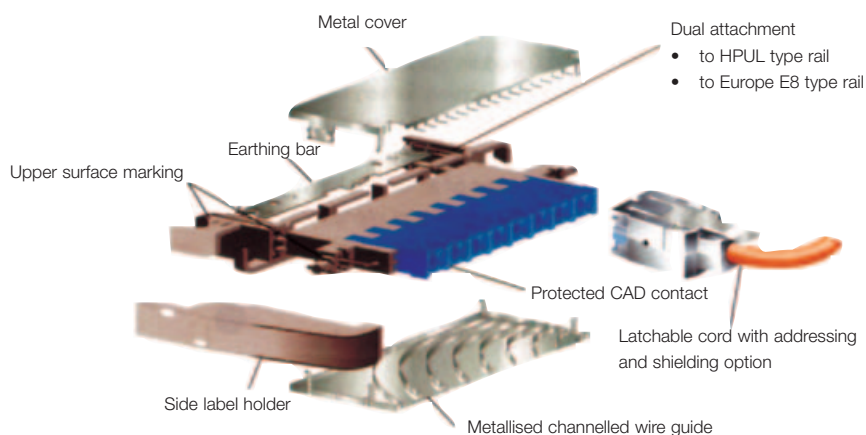
Rationalisation of cable management through the use of label holders and colour codes for easier identification.

Very easy implementation, permitting direct y-shaped installation of jumpering wires in rear cabling version.



Highlights:

- faster cabling with time saving estimated at 20%
- net improvement in transmission performance above 100 MHz
- different solutions for numerous interfaces
- twisted pair on D-Sub, coax, RJ45
- line and error monitoring
- world-wide IDC technique
- compact design
- category 5



1.2 Broadband Application

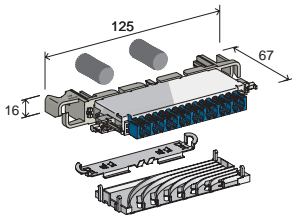
1.2.2 Category 6

Quante™ RCP

Type/Order text

Ref.-No.

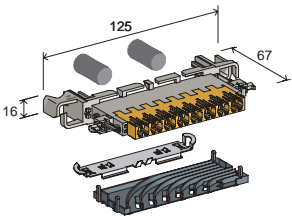
Quante™ RCP Category 6 – Cabling Modules



Shielded rear-cable modules

with metal cover Protects against conducted and radiated electromagnetic interference. Single-wire and multi-wire cables can be connected to either the upper or lower contacts. Equipped with a bonding comb, bonding strip, a channelled wire guide (with the lower half metallised) and a metal cover on the upper half. Requires shielded cords. 8 pair disconnection module

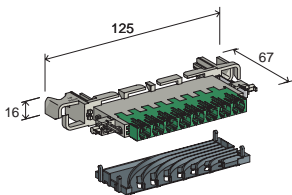
Blue	P45920DH
Yellow	P45840DH
Green	P45839DH
Red	P45809DH
Ivory	P45734DH



Cabling modules for solid wires (rear cabling)

Disconnection module, category 6, 8P, FTP. Equipped with spring, earthing strip and 1 wire guide channel

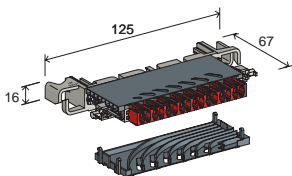
Blue	P46920DF
Yellow	P46840DF
Green	P46839DF
Red	P46809DF
Ivory	P46734DF



Cabling modules for solid wires (side cabling)

Disconnection module, category 6, 8P, UTP. Equipped with 2 wire guide channels

Blue, with spring and 2 wire guide channels	P46920CE
Yellow	P46840CE
Green, with spring and 2 wire guide channels	P46839QE
Red	P46809CE
Ivory	P46734CE



Cabling modules for multi-stranded wires (rear cabling)

Disconnection module, category 6, 8P, UTP. Equipped with spring and 1 wire guide channel

Blue	P46920DA
Yellow	P46840DA
Green	P46839DA
Red	P46809DA
Ivory	P46734DA



1.2 Broadband Application

1.2.3 Category 6

Quante™ RCP 2000

Description

Quante™ RCP - Technical Modules

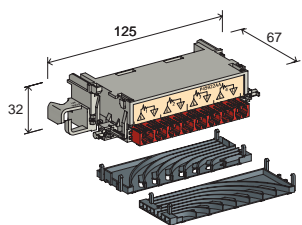
Essential compliments for the RCP 2000 connection modules, the technical module range permits the protection of equipment lines, Ethernet or Token Ring computer networks, additional functions for PABX's and also to provide connection interfaces with the active elements in the network.

Highlights:

- Series protection limiting transient voltage surges
- Double deck protection with 3-pole surge arrestor and transyl or varistor
- Earthing through the rail
- Maintains constant voltage at equipment terminals
- Nominal current of 300mA
- Fuses reset automatically
- 2 step modules

Type/Order text

Ref.-No.

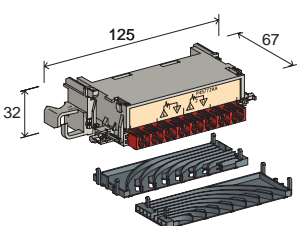


Telephone and special links protection module

For telephony applications (4pair). Working Voltage (V): 48/90 AC/DC. Bandwidth: 5MHz. Ability to handle (8/20 µs spike): 10 shocks 5kA. Limiting voltage in common mode:

- 0.5/700 µs spike 6kV: 200V
- 8/20 µs spike 5kA: 250V

P45922AA

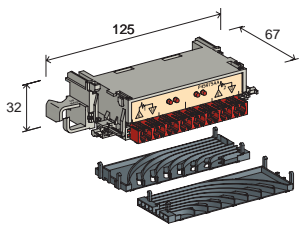


Computer protection module

For Ethernet, Token Ring 4 and 16 Mb/s application. Working Voltage (V): 12 AC. Bandwidth: 20MHz. Ability to handle (8/20 µs spike): 10 shocks 5kA. Limiting voltage in common mode:

- 0.5/700 µs spike 6kV: 18V
- 8/20 µs spike 5kA: 270V

P45722AA



Bipole module, protection and viewing 2 pairs (lines)

All 3 functions available for 2 lines. Mounts directly on network lines. Meets TCI requirements. Working Voltage (V): 48/90 AC/DC. Bandwidth: 5MHz. Ability to handle (8/20 µs spike): 10 shocks 5kA. Limiting voltage in common mode:

- 0.5/700 µs spike 6kV: 200V
- 8/20 µs spike 5kA: 250V

P45975AA

1.2 Broadband Application

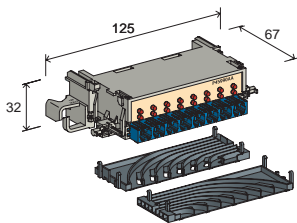
1.2.3 Category 6

Quante™ RCP 2000

Type/Order text

Ref.-No.

Quante™ RCP - Technical Modules

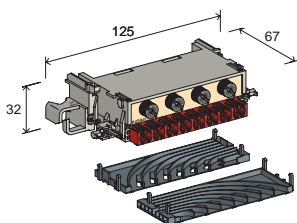


Viewing / call / occupation module

P45990AA

Connected to one of the wires of the network line. No. polarity indication. 2 LED's per line: call and occupation. Low power consumption.

Disconnection IDC
Colour: Blue

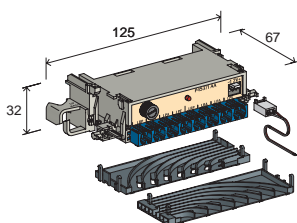


Module for 4 fuses

P45941AA

Accommodates cylindrical fuses 5 x 20mm 100mA fuses supplied. pair / pair protection against overcurrents.

Disconnection IDC
Colour: Red



Line re-routing module

Re-routes 2 units directly to telephone network in case of PABX power failure. Equipped with 4 RT relays that permit the use of any telephone in the system.

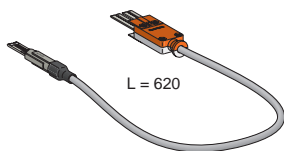
Disconnection IDC
Colour: Blue

12V version

P45371AA

48V version

P45370AA



1-pair cord for 2 and 4 wire ELS

P44927AA



1.2 Broadband Application

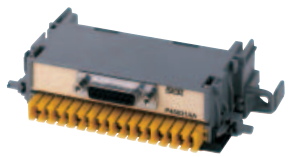
1.2.3 Category 6

Quante™ RCP 2000

Type/Order text

Ref.-No.

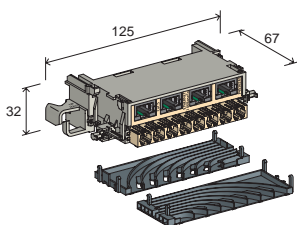
Quante™ RCP - Technical Modules



SUB D

Interface ID connector, patching with plug or cord/connector
Supplied with 10 contacts crimped to wires Disconnect IDC, colour yellow

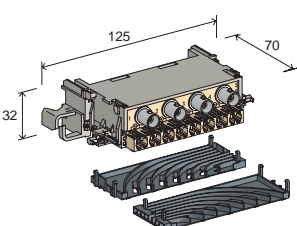
9-pin Sub D male	P45632AA
9-pin Sub D pins female	P45633AA
15-pin Sub D male	P45630AA
15-pin Sub D pins female	P45631AA
25-pin Sub D male	P45628AA
25-pin Sub D pins female	P45629AA



9-pin modular jack connector ISO 8877

With automatic shielding continuity on the profile, providing an interface between the active equipment that has an RJ45 and the distributor frame

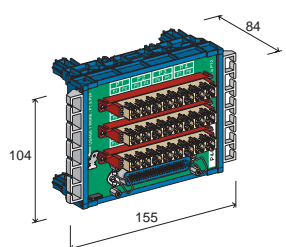
4 modular jacks for Ethernet 100 Base Tx SCQ cabling, ivory	P45362A5
2 modular jacks RJ45 SCQ cabling, ivory	P45368A5
BCS 2 Cabling, yellow	P45363AA



Quadruple Baluns

Permits the connection of pairs to coax RG 62 AU fo IBM Type 3278 terminals

SCQ Cabling Core in 1/Shielding in 2 ivory	P45401AA
BCS 2 Cabling Core in 2/Shielding in 1 yellow	P45400AA



50-pin, RJ-21 female connector

with automatic shielding continuity on the profile, providing an interface between the active equipment equipped with 50-pin connectors and the distribution frame. 12 ports available for cabling with 2-pair cord or 24 ports with 1 pair cord. Used with 50-pin cords. Cords exit from the right.

P44340AA

1.2 Broadband Application

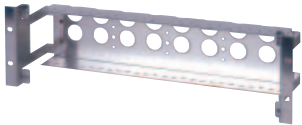
1.2.3 Category 6

Quante™ RCP 2000

Type/Order text

Ref.-No.

Quante RCP Accessories

**19" Rack**

Subrack for 26 vertical mounting, 16 mm pitch modules. When mounted within a 19" rack, cabinet or wall mounted box the modules are recessed in relation to the front face of the mounting uprights. Mounting screws supplied.

P33040AA0000**Multipurpose Insertion Tool**

Inserts and cuts the wire in a single operation. For use with 0,4-0,8 mm diameters. Extractor tool included

C234030A0000**Label holder - 8 pair**

Attached directly to the mounting profile. Colour light grey

P44223AA0000**Rotating Label holder - 8 pair**

Attached to the modules it prevents the attachment of patching wires. Colour light grey

P44506AA0000**Patching Cord Metal shells SFTP cable**

connected 360° to the braid or the screen Straight cabling LS0H Sheath, 1m

P39125A50000

Comprehensive range of accessories available - please ask for further details.

1.2 Broadband Application

1.2.4 DDF Quante™ ID 3000™

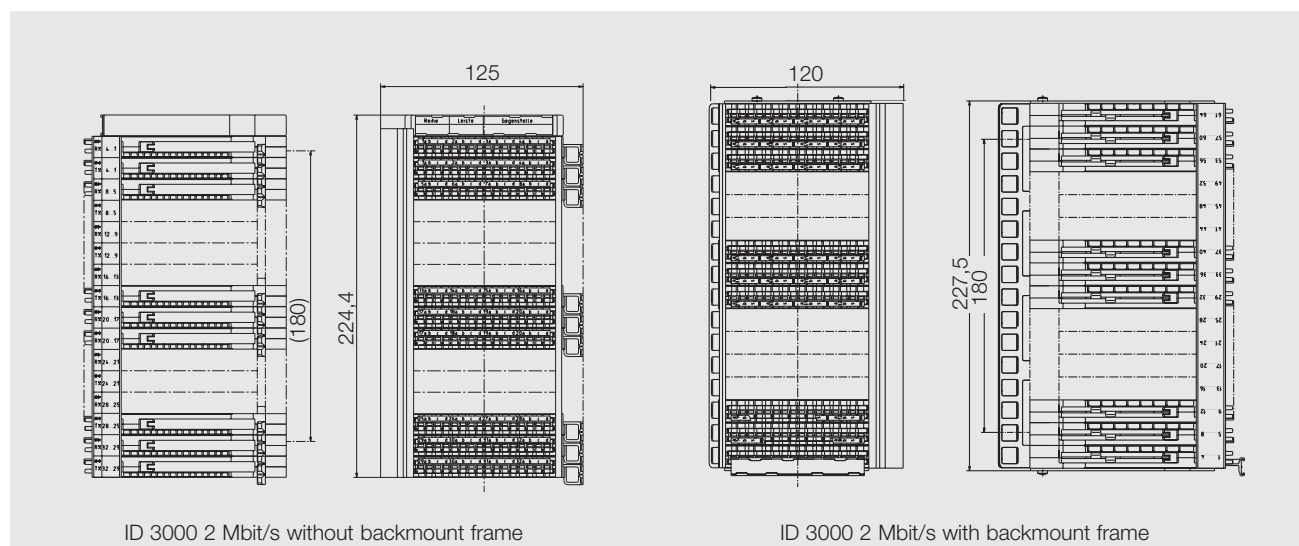
Description

Quante ID 3000 DDF

New designed Quante ID 3000 modules for termination and jumpering of 2 Mbit/s data-transmission. Enlarged wire guide channels at the exchange side allow the use of shielded 2 Mbit/s jumper wires up to the double contact without removing the shielding or isolation.

ID 3000 2 Mbit/s are available either as a backmount frame or modular solution, and are suitable for mounting on to existing ID 3000 frames / profiles, as well as for existing frames (e.g. system 71). Various test, patch, monitoring cords, earth and overvoltage protection magazines complete the ID 3000 2 Mbit/s product line as a professional solution for your network.

PU: 1 pc
 Colour of the module: RAL 7032
 Material of the backmount frame: stainless steel 1,5 mm



Each block is supplied with:

- 16 disconnection modules 8 pair
- 16 earthing elements
- 1 cable cover
- 1 covering strip
- 1 set of labelling strip
- 1 labelling frame
- 1 mounting material
- (1 backmount frame incl. mounting material)
- Mounting instruction

Highlights:

- Modules with enlarged wire guide housings at the exchange side
- Guiding of the shielded 2 Mbit/s jumper wires incl. outer isolation up to the ID 3000 double contacts
- Port oriented jumper organisation
- Pre-installed earthing for earth all screened wires
- Modular or backmount frame solution
- Comprehensive accessories

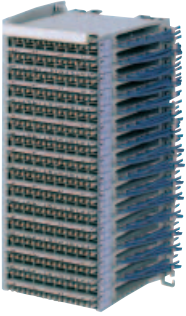
1.2 Broadband Application

1.2.4 DDF Quante™ ID 3000™

Type/Order text

Ref.-No.

Quante ID 3000 DDF Disconnection block 16 x 4 abs



**for vertical mounting
without backmount frame**

Use: For ID 3000 distribution frames or profile only

PU: 1 pc

Weight: 1,17 kg

15-564-32400



**for horizontal and vertical mounting
with backmount frame**

Use: For mounting on existing distribution frames

(e.g. system 71)

PU: 1 pc

Weight: 1,67 kg

15-564-35426

ID 3000 Accessories see pg. 20-23

1.2 Broadband Application

1.2.5 xDSL

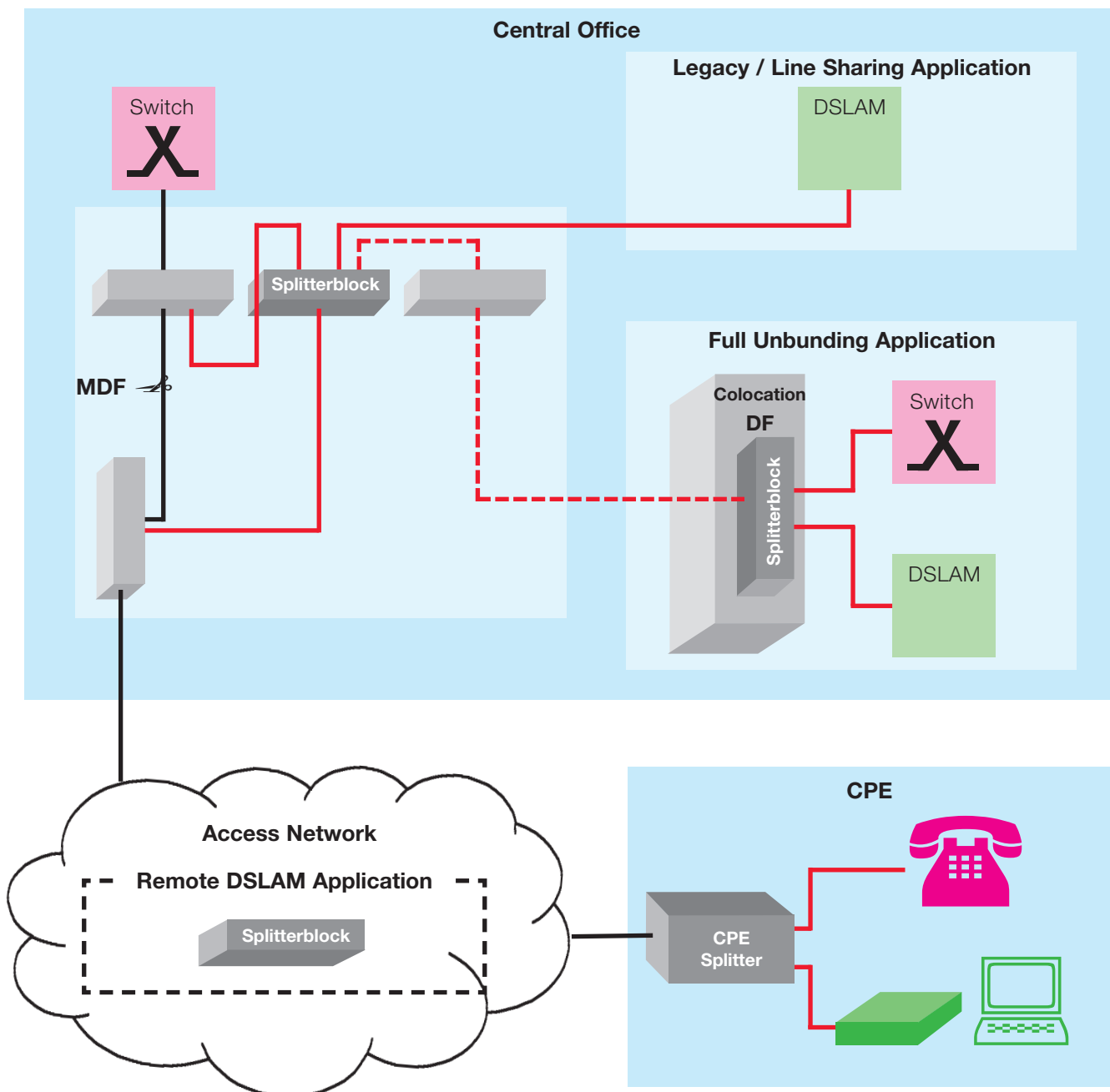
3M™ BRCP Integrated Splitter Block

Description

xDSL offers the possibility for providing new broadband services such as fast Internet access using the existing telephone line. The 3M splitter blocks are used to upgrade the access network splitting narrowband and broadband signal on the CO side and at the same time taking into consideration the well-known wiring guidelines at MDF sites. The modular, space-saving concepts allow for a cost optimised installation according to the local requirements. Individual fault find facilities support service thus reducing cost associated with service down time.

Highlights:

- Integrated component of the (legacy) connectivity block
- Modular Concept to meet different applications in CO and outside plant
- Compact design
- Future proof by extendability with different xDSL modules

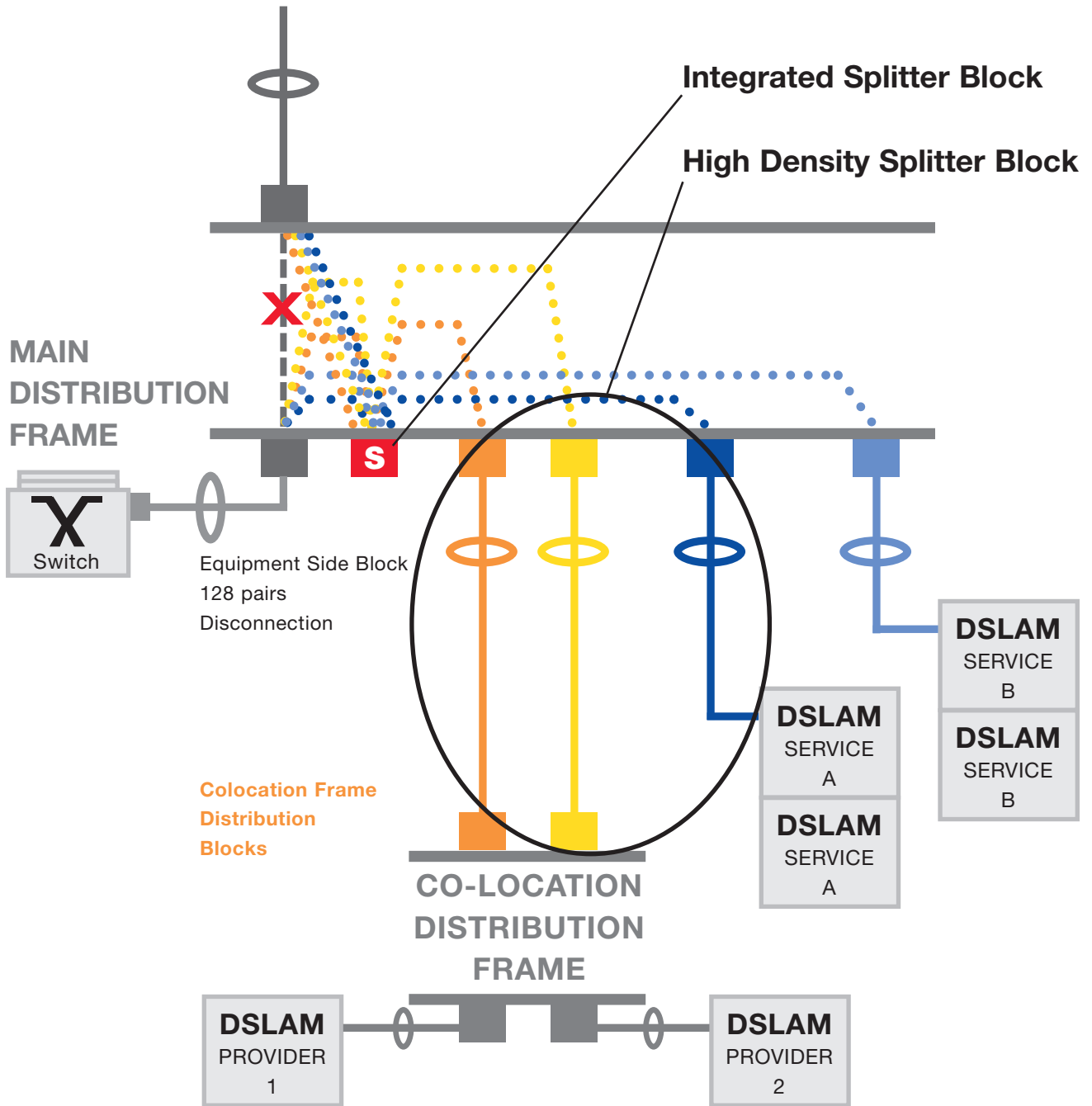


1.2 Broadband Application

1.2.5 xDSL

Schematic

Description



UNBUNDLED LINES

ILEC SERVICES

INTEGRATED SPLITTER BLOCK

1.2 Broadband Application

1.2.5 xDSL

3M™ BRCP Integrated Splitter Block

Description

Latest generation Integrated Splitter Block 3M™ BRCP is matching all type of DSLAM equipment deployment (DSLAM interconnection at the CO, Line-sharing and unbundling, Remote DSLAM deployments in the OSP as well as at the Customer Premises).

Product design integrates unique features to match TELCO's expectations for a mass xDSL lines deployment with the better Service Level.

Increasing Quality of Service

Splitters are fully protected inside the product to avoid any unsafe disconnection of the end-user. This is particularly important with the emergence of higher added value services over DSL such as Triple Play services.

Optimizing the space in the Central Office

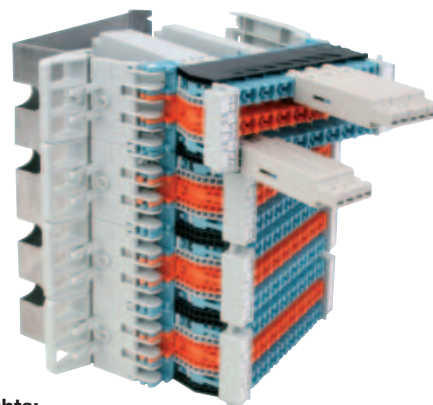
Very compact and modular by design, BRCP requires less space on the MDF frame and is very adapted for Remote application in cabinets or shelters. 64 ADSL ports can be served from a 180 mm length block.

Improving OPEX

Using Single port splitter plugs, BRCP reduces the number of jumpering and maintenance operations (Service change, ADSL, ADSL2+, a.SHDSL, VDSL, lifeline service in case of disconnection from the Data service, Intrusive testing in all directions).

Adaptation to TELCO Engineering procedures

BRCP splitter block is convenient for Craftmen as a whole 8 pairs bundle can be terminated on the same connection module. This is also better matching existing Information Systems. Products does not require any particular investment in connectivity tooling and training as both Wire wrap and 3M™ IDC connectivity can be proposed.



Highlights:

Connectivity

- Separated termination field for DSLAM wires or jumpers
- Wires Terminations without removing splitters
- Front facing IDC or WW contacts
- Wire guide channels

Splitters or Modules

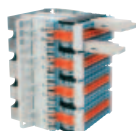
- Removable Single port splitter modules
- Bridging modules for g.SHDSL, Full unbundling and VoIP applications
- Different types of splitters
- Lifeline service : Voice circuit is maintained and Data service is disconnected while removing the splitter

Test functionalities

- Intrusive testing capabilities in all directions (DSLAM, LINE, POTS) by insertion of the 3 ways Test Plug instead at the splitter position
- Parallel Test plug for front side non intrusive testing (without removing the splitter)

Type/Order text

Ref.-No.



IDC Connectivity

- 3M™ BRCP Integrated Splitter Block, 48 ports, IDC, length 135 mm
- 3M™ BRCP Integrated Splitter Block, 64 ports, IDC, length 180 mm
- 3M™ BRCP Integrated Splitter Block, 72 ports, IDC, length 225 mm

- C242707A**
- C242708A**
- C242755A**

IDC Connectivity with protection facility

- 3M™ BRCP Integrated Splitter Block, 48 ports, IDC, with prot. facility
- 3M™ BRCP Integrated Splitter Block, 64 ports, IDC, with prot. facility

- C242770A**
- C242771A**

Wire Wrapping Connectivity

- 3M™ BRCP Integrated Splitter Block, 48 ports, WW, length 135 mm
- 3M™ BRCP Integrated Splitter Block, 64 ports, WW, length 180 mm

- C242762A**
- C242710A**

1.2 Broadband Application

1.2.5 xDSL

3M™ BRCP Protection Module

Description

3M BRCP Protection Module for Integrated Splitter Block

The BRCP new generation integrated splitter is matching any topology of ADSL deployment in the CO as well as in remote conditions.

A protection device based on a single line Protection plug allows providing the necessary protection level according to the application.

This flexible range of protection allows offering an individual protection of each single port.

This protection plug is based on an over voltage protection done by a Gas Discharge Tube equipped with an external Fail safe device.

Product range is composed of 2 types of Protection Modules:

Double Protection Module for DSLAM ports protection

- 1 module protects 2 DSLAM ports
- Module is inserted in the DSLAM interconnection module (in the center, orange colored) of the swiveling element

Single Protection Module for SUBSCRIBER LINE port protection

- Module is inserted on the external interconnection of the swiveling element



3M™ BRCP Protection Module for Integrated Splitter Block

Features:

- Protection remains during operation on splitters at the rear of the product
- Multipurpose
- Cost effectiveness

Benefits:

- Protection is always operational
- Complete range of protection for multiple application
- DSLAM pots protection
- Subscriber line protection
- Single line protection are offering more flexibility and maintenance fees improvement



1.2 Broadband Application

1.2.5 xDSL

3M™ BRCP Protection Module

Specifications

Application:

DSLAM Protection

Double line protection plug is inserted in front of the “D” marked connection module. 2 DSLAMs ports are individually protected.

Subscriber Line Protection

Protection Module is inserted on the “P” and “S” marked connection module. The “S” Subscriber port is protected.

Earthing

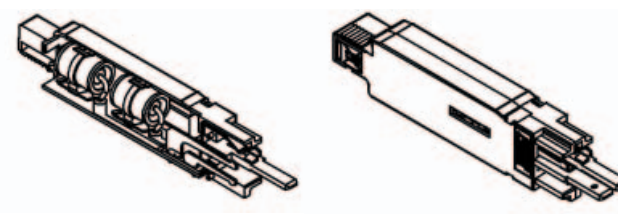
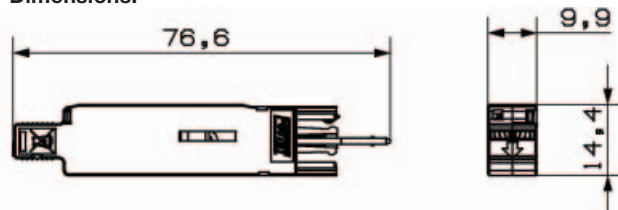
Earthing of the protection module is done through a built in earth contacts. The earthing contact is maintained while the block is swiveled in order to keep the protection active while operating on the splitter at the rear of the module.

Technical Data:

Static Breakdown Voltage: 250V +/- 20%

Impulse Current discharge: 5 kA

Dimensions:



Type/Order text

Ref.-No.



3M™ DSLAM Double Protection Module 260V

grey, 100 units per package

C233322A



3M™ LINE Protection Module 260V

grey, 100 units per package

C233993A



3M™ DSLAM Double Protection Module 420V

orange, 100 units per package

C233323A

1.2 Broadband Application

1.2.5 xDSL

3M™ BRCP Single Line Splitter & Bridging Modules

Description

3M BRCP Single Line Splitter & Bridging Modules

The new generation 3M BRCP Splitter Block Filter is providing more **flexibility**.

This feature is based on the management of single line splitters allowing a customer based service allocation. This single line management allows mixing match different services and different providers lines on the same block in order to decrease the cost and rapidly to move from one service to the other.

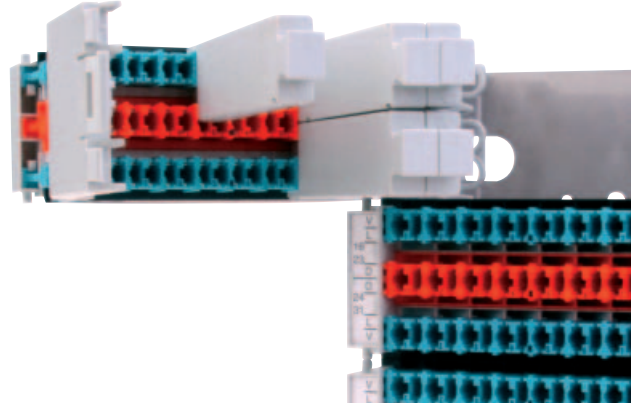
This **flexibility** is very adapted to emergence of upgraded services over DSL such as Multi Play service offers as well as for splitter less services such as g.SHDSL and VoIP.

Splitters and Bridging Modules are inserted at the rear of the Splitter Block Filter after swivelling the 16 ports swiveling element.

A mechanical device is assuring that the splitter is only inserted at the proper position.

Splitters and Bridging modules can be removed at any time without removing wires from the block.

When either splitter module or bridging module is removed a life-line service is maintained by an automatic connection between POTS and Customer LINE ports.



3M™ BRCP Single Line Splitter Modules

Features:

- Different type of splitters available
- Lifeline service
- Bridging Module

Benefits:

- Available solution for any kind of network
- Splitter removal results in disconnection of DSLAM pot and voice circuit connection
- Available solution for gSHDSL, VoIP, full unbundling



1.2 Broadband Application

1.2.5 xDSL

3M™ BRCP Single Line Splitter & Bridging Modules

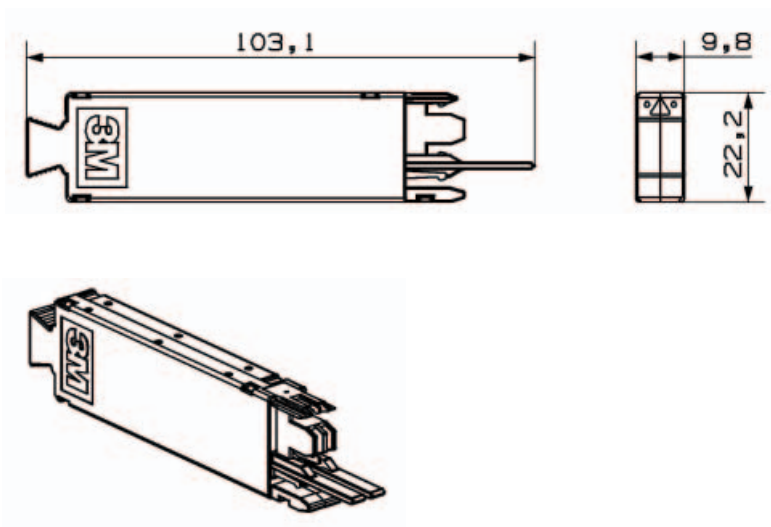
Specifications

Technical Data:

Splitter Module: Low Pass filter with DC blocking capacitors





Bridging Module: Disconnects the POTS port and connects DSLAM ports with the Customer LINE

Dimensions:



Type/Order text

Ref.-No.

	3M™ ETSI Option B Splitter Module grey	C242757A
	3M™ ETSI Option A Splitter dark grey	C242768A
	3M™ 600 ohms Splitter Module blue	C242769A
	3M™ Bridging Module black	C242738A
	3M™ ETSI Option A ISDN Splitter 100 units 10 units	C242774C C242775C

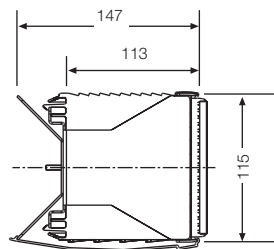
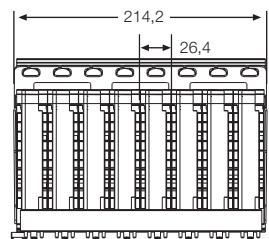
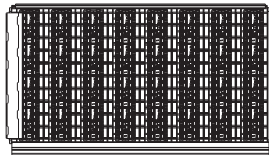
1.2 Broadband Application

1.2.5 xDSL

ID 3000 Integrated ADSL Splitter

Technical characteristics

15-032-41626

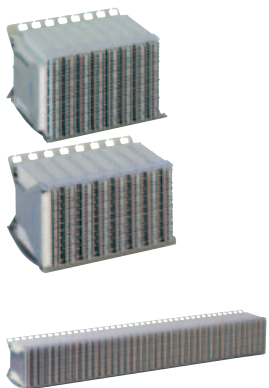


Each block is supplied with:

- 8 splitter modules (4 splitter elements on each module)
- 1 cable cover
- 1 covering strip with labelling strip
- 1 set of covering strips
- 1 backmount frame inclusive wire guiding

Type/Order text

Ref.-No.



ADSL Universal Splitterblock with backmount frame

32 subscribers, for horizontal mounting Use: For mounting on existing distribution frames, PU: 1 pc, Weight: 2,92 kg

15-032-41527

ADSL Universal Splitterblock with backmount frame for

Line-Sharing applic. 32 subscribers, for horizontal mounting second wire guiding at the jumper side. Use: For mounting on existing distribution frames PU: 1 pc, Weight: 3,1 kg

15-032-41626

Base Unit with backmount frame for horizontal mounting

160 subscribers prepared with 40 wire guide housings for ADSL Splitter modules and SDSL modules.

Use: For mounting on existing distribution frame

PU: 1 pc, Length: approx. 891 mm

15-160-41526

Base Unit with backmount frame for horizontal mounting

32 subscribers prepared with 8 wire guide do not mention length for this product.

Use: For mounting on existing distribution frame

PU: 1 pc

15-032-42528

ADSL Universal Splitter module

4 subscriber, PU: 8 pcs

62251-501 31

ADSL POTS Splitter module 4 subscribers PU: 8 pcs

62251-511 30

SDSL module 4 subscribers, PU: 4 pcs for mounting on 15-160-41526

62251-503 31

ID 3000 Accessories see pg. 20 - 23

For further splitter solutions, please consult us.

1.2 Broadband Application

1.2.5 xDSL

ID 3000+ MDF Connectivity for xDSL

Description

ID 3000+ - the new generation of ultra compact MDF connectivity - has been developed to meet the specific requirements when upgrading the access network for broadband service deployment using DSL technology. Because of the compact design a space-saving expansion of the main distribution frame with splitter functionality becomes possible and at the same time stay with the well proven advantages in handling of ID 3000™ IDC connection technology.

The ID3000+ connectivity blocks can be delivered in different sizes dependent on mechanical and electrical preconditions (type of MDF, granularity of the DSLAM in use). The pictures show a block of 900mm length for 240 subscribers and a small block for 32 subscribers – both blocks for horizontal mounting on MDF frames

such as type HVT 71. Dependent on the xDSL signal applied splitter- or connection-boards can be inserted to connect the broadband service to the subscriber line.

All connections are made using the well proven ID 3000™ IDC connection technology. Wireguides help organizing the routing of the twisted pairs and cables are fixed using dedicated wholes in the backmount frame.

It is possible to do precabbling of the ID 3000+ disconnection blocks for DSLAM-, switch- and line side. Due to “life line” functionality the narrowband service is throughconnected to the subscriber without having boards inserted

Features:

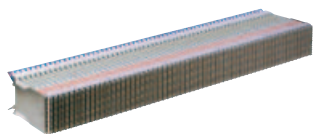
- Integrated component of the connection system ID 3000™
- Ultra compact design
- Disconnection facility for DSLAM- and switch-side
- Modular concept
- “Life line“ functionality
- Different block sizes
- Concept for shielded jumper cables
- Complies with ETSI TS 101952

Benefits:

- User-friendly system
- Space saving in MDF rooms
- Fast fault
- Flexible to extend with ADSL- or SDSL-boards
- Precabbling / no service interruption in case of board exchange
- Fit to DSLAM granularity

Type/Order text

Ref.-No.



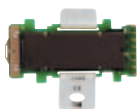
ID 3000+ Disconnection block for xDSL 240 lines

15-240-61527



ID 3000+ Disconnection block for xDSL 32 lines

15-032-61527



ADSL Universal splitter board 32 lines

62092-512 00



xDSL Connection board 32 lines

62092-513 00

POTS ETSI Option A Splitter

upon request